

The Cherry

at Rose Meadow



3 bedroom home

Plots: 180, 181

Sq.m 74.5

Sq.ft 802

- Modern fitted Symphony kitchens
- Contemporary bathroom suite
- High quality Polyflor vinyl flooring to kitchens and bathrooms
- En-suite to the master bedroom
- Driveway with 2 parking spaces
- Turfed rear gardens
- Gas boiler
- Chrome heated towel rail
- 10 year NHBC new homes warranty

People. Places. Purpose.

Disclaimer

The details in this brochure are subject to change and do not constitute part of a contract. Prospective buyers must satisfy themselves by inspection or otherwise as to the accuracy of information given in the brochure. Images are provided for illustration purposes only and may differ to the homes available; please ask a sales advisor for more information.



The Cherry Floor Plans

Ground floor

KITCHEN / DINER

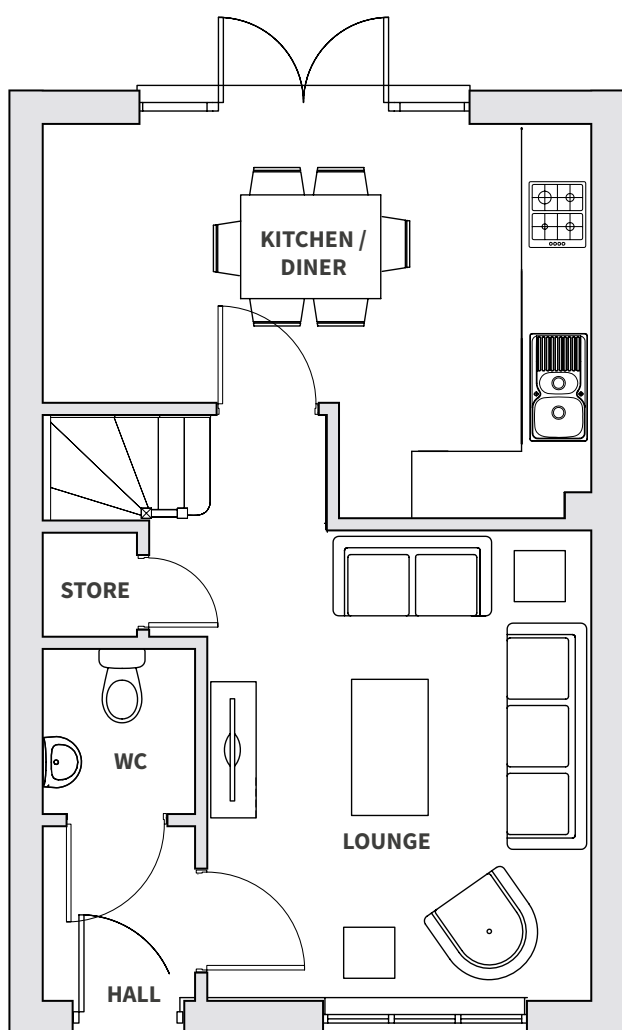
Metres: 2.47 x 4.83

Feet: 8.10 x 15.84

LOUNGE

Metres: 4.16 x 3.40

Feet: 13.64 x 11.15



First floor

BEDROOM 1

Metres: 2.08 x 4.82

Feet: 6.82 x 15.81

BEDROOM 2

Metres: 3.11 x 2.56

Feet: 10.20 x 8.39

BEDROOM 3

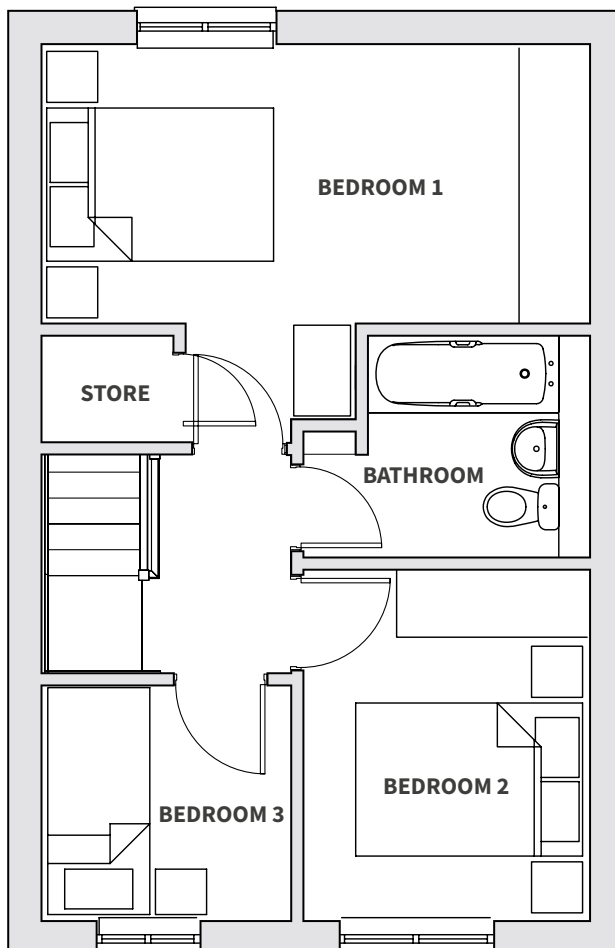
Metres: 2.09 x 2.20

Feet: 6.87 x 7.23

BATHROOM

Metres: 2.0 x 1.99

Feet: 6.56 x 6.52



Rose Meadow, Northwich, CW9 8AQ
0161 447 5050 / sales@plumlife.co.uk



Disclaimer

The details in this brochure are subject to change and do not constitute part of a contract. Prospective buyers must satisfy themselves by inspection or otherwise as to the accuracy of information given in the brochure. Images are provided for illustration purposes only and may differ to the homes available; please ask a sales advisor for more information.

The Curzon

at Rose Meadow



3 bedroom home
Plots: 182, 183, 184
Sq.m 70.79
Sq.ft 762

- Modern fitted Symphony kitchens
- Contemporary bathroom suite
- High quality Polyflor vinyl flooring to kitchens and bathrooms
- En-suite to the master bedroom
- Driveway with 2 parking spaces
- Turfed rear gardens
- Gas boiler
- Chrome heated towel rail
- 10 year NHBC new homes warranty

People. Places. Purpose.

Disclaimer

The details in this brochure are subject to change and do not constitute part of a contract. Prospective buyers must satisfy themselves by inspection or otherwise as to the accuracy of information given in the brochure. Images are provided for illustration purposes only and may differ to the homes available; please ask a sales advisor for more information.



The Curzon Floor Plans

Ground floor

KITCHEN / DINER

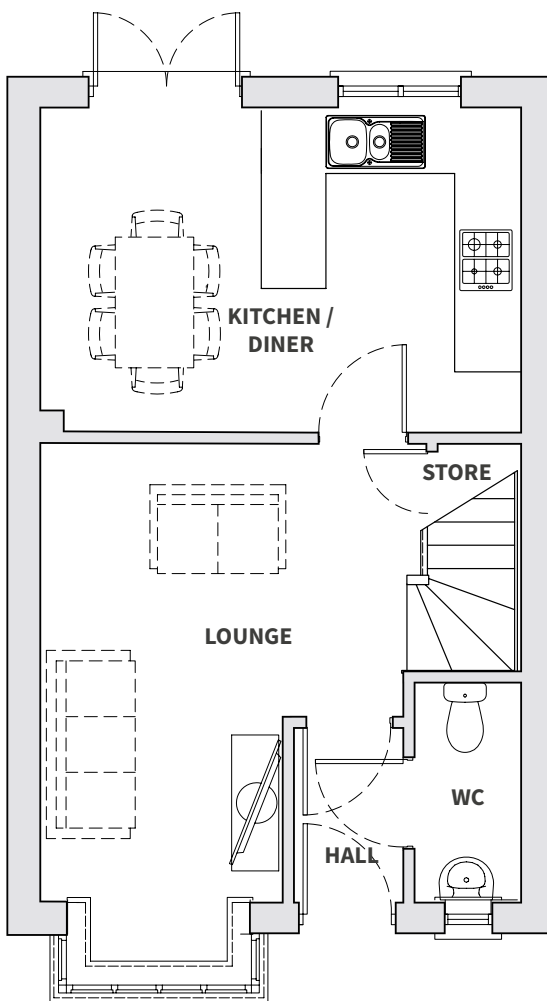
Metres: 3.11 x 4.36

Feet: 10.2 x 14.30

LOUNGE

Metres: 4.21 x 2.65

Feet: 13.81 x 8.69



First floor

BEDROOM 1

Metres: 2.84 x 4.37

Feet: 9.31 x 14.33

BEDROOM 2

Metres: 2.7 x 2.58

Feet: 8.85 x 8.46

BEDROOM 3

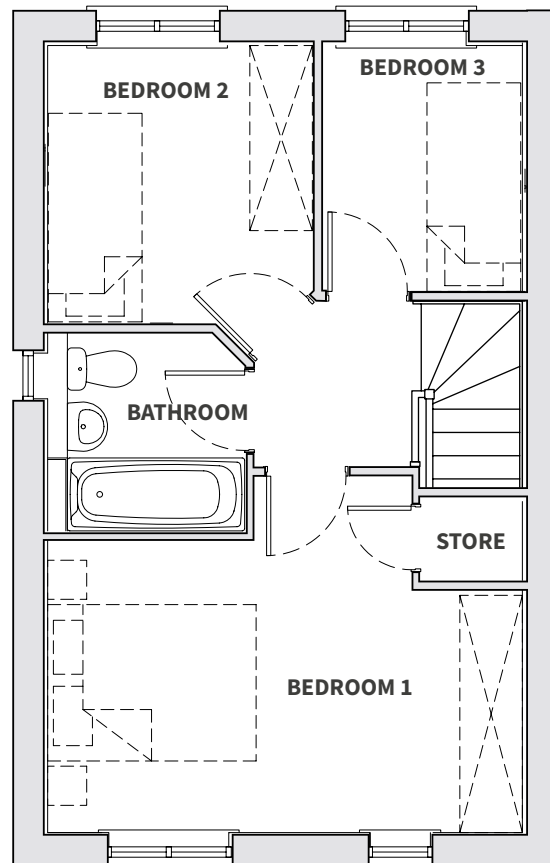
Metres: 2.39 x 1.96

Feet: 7.84 x 6.43

BATHROOM

Metres: 1.93 x 1.93

Feet: 6.33 x 6.33



Rose Meadow, Northwich, CW9 8AQ
0161 447 5050 / sales@plumlife.co.uk



Disclaimer

The details in this brochure are subject to change and do not constitute part of a contract. Prospective buyers must satisfy themselves by inspection or otherwise as to the accuracy of information given in the brochure. Images are provided for illustration purposes only and may differ to the homes available; please ask a sales advisor for more information.

The Shelley

at Rose Meadow



3 bedroom home

Plots: 179

Sq.m 84.5

Sq.ft 910

- Modern fitted Symphony kitchens
- Contemporary bathroom suite
- High quality Polyflor vinyl flooring to kitchens and bathrooms
- En-suite to the master bedroom
- Driveway with 2 parking spaces
- Turfed rear gardens
- Gas boiler
- Chrome heated towel rail
- 10 year NHBC new homes warranty

People. Places. Purpose.

Disclaimer

The details in this brochure are subject to change and do not constitute part of a contract. Prospective buyers must satisfy themselves by inspection or otherwise as to the accuracy of information given in the brochure. Images are provided for illustration purposes only and may differ to the homes available; please ask a sales advisor for more information.



The Shelley Floor Plans

Ground floor

KITCHEN / DINER

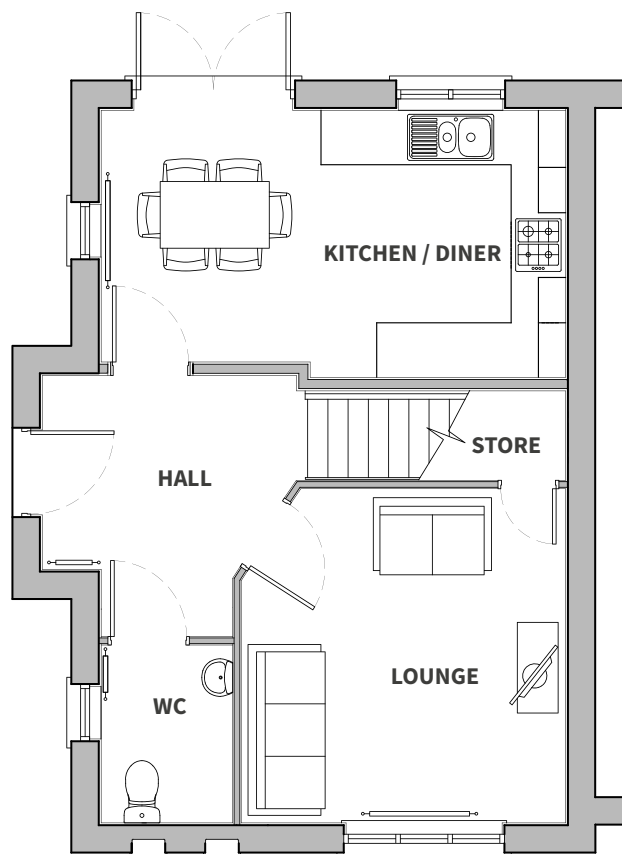
Metres: 2.99 x 5.16

Feet: 9.80 x 16.92

LOUNGE

Metres: 3.20 x 3.70

Feet: 10.49 x 12.13



First floor

BEDROOM 1

Metres: 3.04 x 3.82

Feet: 9.97 x 12.53

BEDROOM 2

Metres: 2.74 x 2.74

Feet: 8.98 x 8.98

BEDROOM 3

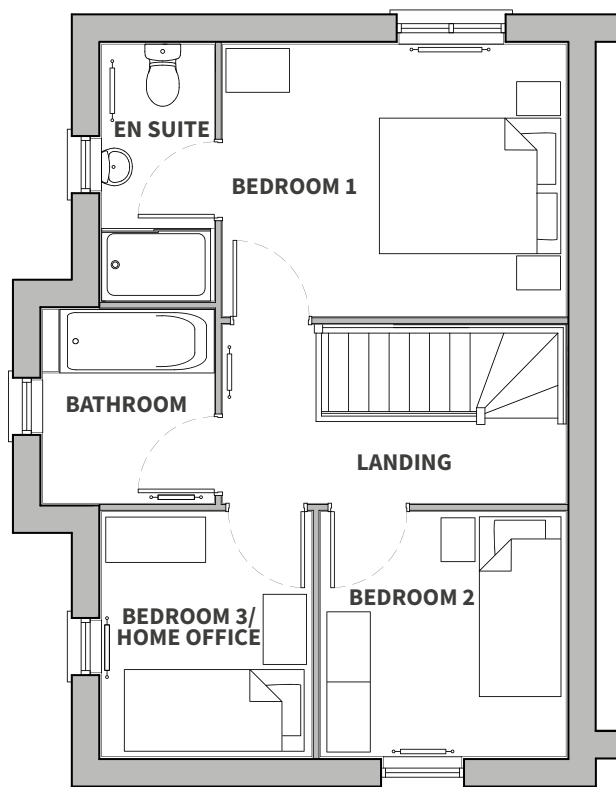
Metres: 2.49 x 2.35

Feet: 8.16 x 7.70

BATHROOM

Metres: 2.03 x 2.79

Feet: 6.66 x 9.15



Rose Meadow, Northwich, CW9 8AQ
0161 447 5050 / sales@plumlife.co.uk



Disclaimer

The details in this brochure are subject to change and do not constitute part of a contract. Prospective buyers must satisfy themselves by inspection or otherwise as to the accuracy of information given in the brochure. Images are provided for illustration purposes only and may differ to the homes available; please ask a sales advisor for more information.