

The Cherry Floor Plans

Ground floor

KITCHEN / DINER

Metres: 4.90 x 3.03

Feet: 16.1 x 9.9

LOUNGE

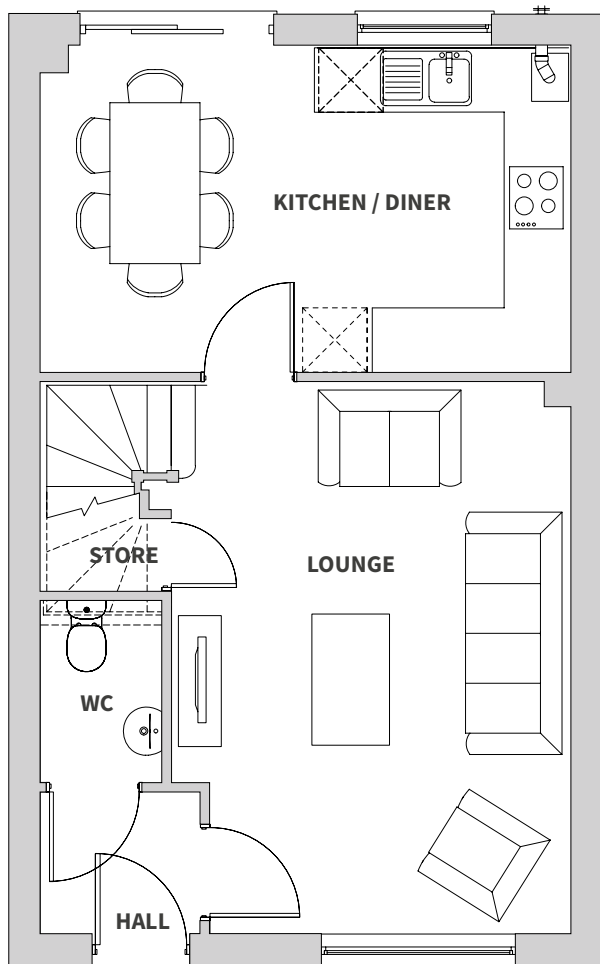
Metres: 5.13 x 3.70

Feet: 16.8 x 12.10

WC

Metres: 1.70 x 1.11

Feet: 5.6 x 3.6



First floor

BEDROOM 1

Metres: 3.03 x 4.90

Feet: 9.9 x 16.1

EN SUITE

Metres: 1.20 x 2.20

Feet: 3.9 x 7.2

BEDROOM 2

Metres: 2.86 x 2.71

Feet: 9.4 x 8.9

BEDROOM 3

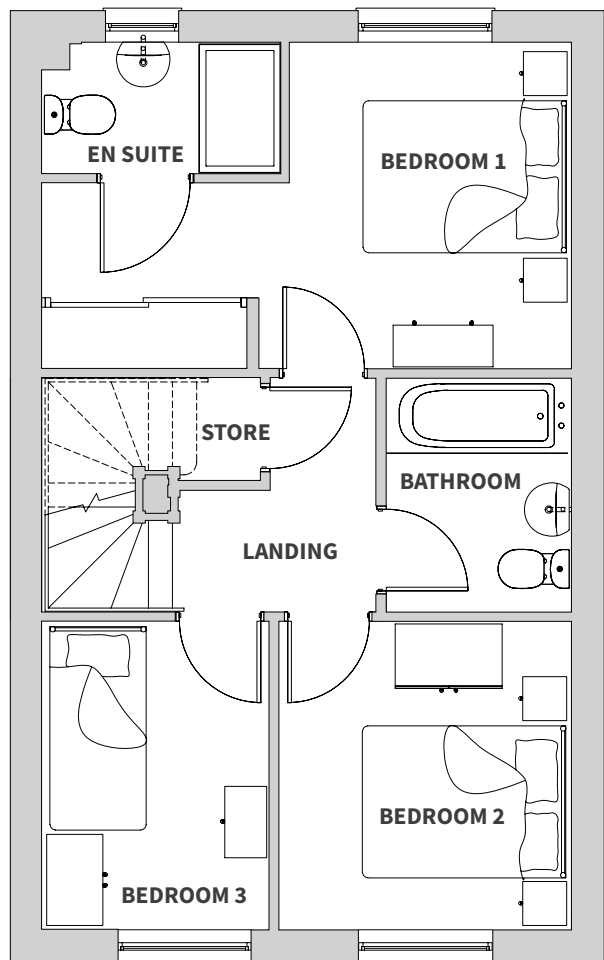
Metres: 2.86 x 2.10

Feet: 9.4 x 6.9

BATHROOM

Metres: 1.8 x 1.71

Feet: 7.2 x 5.6



Oak Leigh Gardens, Barrow, BB7 9AN
0161 447 5050 / sales@plumlife.co.uk



Disclaimer

The details in this brochure are subject to change and do not constitute part of a contract. Prospective buyers must satisfy themselves by inspection or otherwise as to the accuracy of information given in the brochure. Images are provided for illustration purposes only and may differ to the homes available; please ask a sales advisor for more information.

The Hornbeam Floor Plans

Ground floor

KITCHEN / DINER

Metres: 4.34 x 2.80

Feet: 14.2 x 9.2

LOUNGE

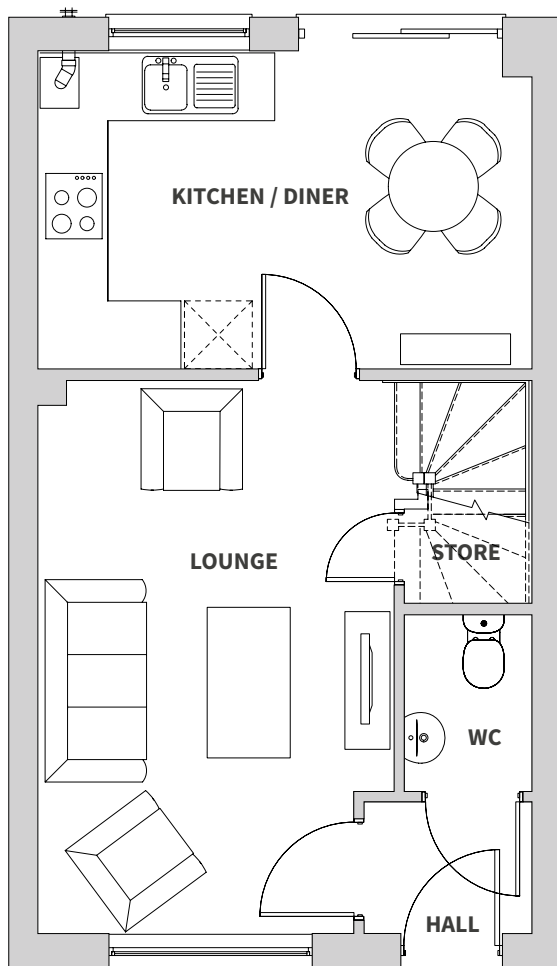
Metres: 4.90 x 3.14

Feet: 16.1 x 10.3

WC

Metres: 1.60 x 1.11

Feet: 5.2 x 3.6



First floor

BEDROOM 1

Metres: 3.16 x 3.17

Feet: 10.4 x 10.4

EN SUITE

Metres: 2.80 x 1.09

Feet: 9.2 x 3.6

BEDROOM 2

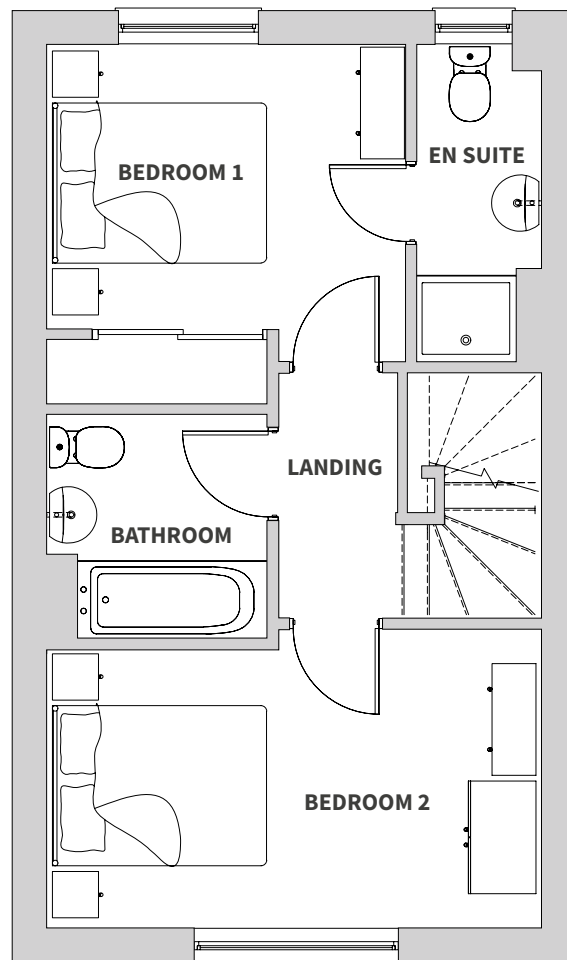
Metres: 4.34 x 2.63

Feet: 14.2 x 8.2

BATHROOM

Metres: 2.0 x 1.94

Feet: 6.6 x 6.4



Oak Leigh Gardens, Barrow, BB7 9AN
0161 447 5050 / sales@plumlife.co.uk



Disclaimer

The details in this brochure are subject to change and do not constitute part of a contract. Prospective buyers must satisfy themselves by inspection or otherwise as to the accuracy of information given in the brochure. Images are provided for illustration purposes only and may differ to the homes available; please ask a sales advisor for more information.