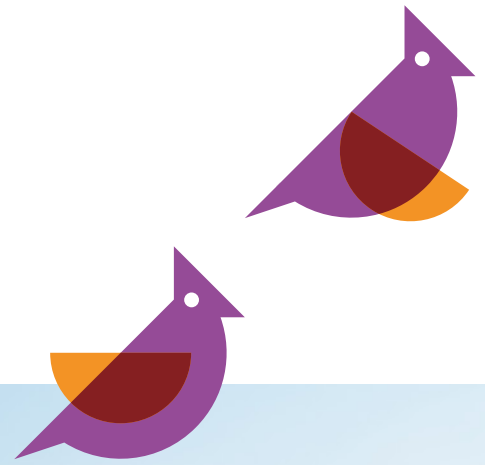


Rowe Gardens



2, 3 & 4 bedroom homes available
through Shared Ownership

Blue Mans Way, Catcliffe, Rotherham, S60 5UR
0161 447 5050 / sales@plumlife.co.uk

People. Places. Purpose.



Catcliffe

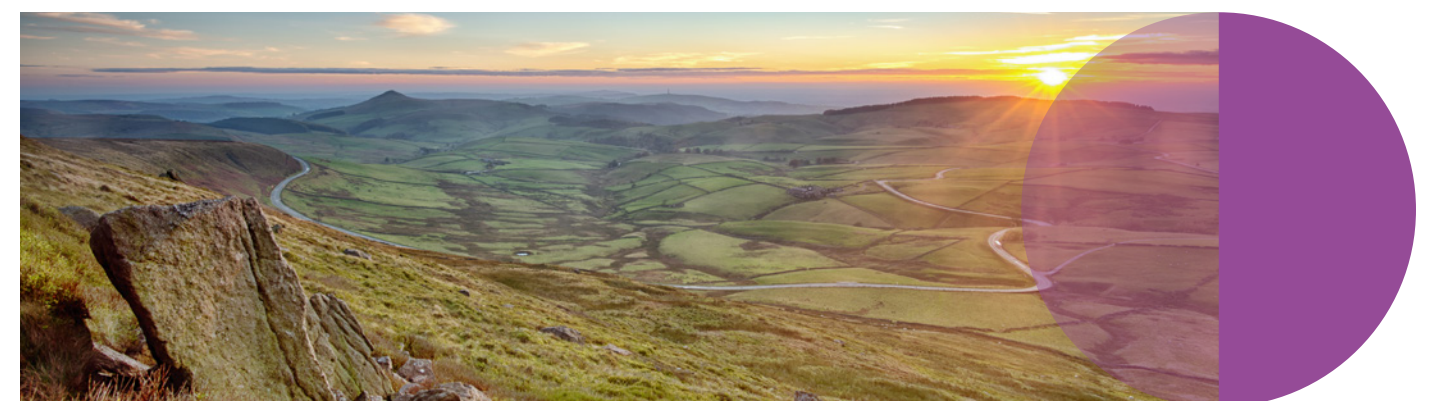
A peaceful village nestled upon the river Rother

The surrounding towns of Sheffield make for fantastic and accessible places to live. To the east and less than 20 minutes away you'll find the pleasant village of Catcliffe within close proximity to the vibrant city centre where you'll find an array of exciting amenities right on your doorstep. As such, Catcliffe is the perfect location for your next home and a wonderful place to settle down and imbure yourself into a new community.

If you fancy a bit of retail therapy, you'll find one of the largest shopping centres in the UK with Meadowhall less than a 10 minute drive away, boasting an abundance of popular shops and restaurants for all to enjoy. In terms of entertainment, you're in luck with the conveniently located Valley Centertainment, home to a large multiplex cinema, bowling alley and mini golf course to keep you and the family busy.

Those who enjoy spending their spare time outdoors will be happy to know that the wider area of Rotherham has lots of outdoor activities on offer with stunning woodlands, wetlands and rivers close by. Whether you fancy a brisk stroll around the picturesque Catcliffe flash nature reserve or a family day out at Waverley Central Park and Community Gardens, this small village has it all.

Excellently connected by rail and road; Catcliffe lies just off the A630 Rotherham Gateway, which links the M1 directly into Sheffield city centre. For those who don't drive you'll find Darnall train station a short distance away, boasting regular services into Sheffield and Lincoln, ideal for those who commute to work. With excellent transport links and so much going on, our new homes in Catcliffe shouldn't be missed!



Rowe Gardens

Plumlife are delighted to release a range of new homes at Rowe Gardens in Catcliffe. The development includes a contemporary collection of two, three and four bedroom homes, which will be available to purchase through Shared Ownership. Combining a desirable location with stunning high-quality homes, Rowe Gardens is sure to appeal to all kinds of prospective homebuyers with the nearby town of Sheffield on its doorstep.

Whilst working on this development, we decided that we wanted to pay tribute to the towns architectural history naming it after Colin Rowe, who was born and grew up in the local area. Rowe was well known for his work and later went on to become one of the most inspirational people in urbanism, we felt that there was a nice synergy between his background and the work that we do and wanted this development's name to have real meaning behind it - welcome to Rowe Gardens!





The Cambridge

2 bedroom home

Plots: 6, 7, 12, 13, 18, 19, 20, 21

Sq.m 74.9

Sq.ft 806

- Modern fitted kitchens with integrated appliances
- High quality Karndean flooring to the kitchen and bathrooms
- Accessible downstairs WC
- Allocated off-road parking
- 10 year NHBC new homes warranty
- Private turfed rear gardens



Ground floor

LIVING

Metres: 5.0 x 3.2

Feet: 16.40 x 10.49

KITCHEN

Metres: 2.5 x 2.3

Feet: 8.2 x 7.54

DINER

Metres: 2.2 x 2.8

Feet: 7.21 x 9.18

WC

Metres: 2.2 x 1.5

Feet: 7.21 x 4.92



First floor

BEDROOM 1

Metres: 4.5 x 3.2

Feet: 14.76 x 10.49

BEDROOM 2

Metres: 4.5 x 3.1

Feet: 14.76 x 10.17

BATHROOM

Metres: 2.3 x 2.1

Feet: 7.54 x 6.88



Disclaimer

The details in this brochure are subject to change and do not constitute part of a contract. Prospective buyers must satisfy themselves by inspection or otherwise as to the accuracy of information given in the brochure. Images are provided for illustration purposes only and may differ to the homes available. Please speak to a sales advisor for further information on the external layouts and levelling on this site.



The Washington

3 bedroom home

Plots: 8, 9, 10, 11, 58, 59, 69, 70, 71, 72, 73, 74, 75

Sq.m 85.7

Sq.ft 923

- Modern fitted kitchens with integrated appliances
- High quality Karndean flooring to the kitchen and bathrooms
- Energy efficient home to save money on bills
- Allocated off-road parking
- 10 year NHBC new homes warranty
- Private turfed rear gardens



Ground floor

KITCHEN/DINER & LOUNGE

Metres: 3.2 x 8.3

Feet: 10.49 x 27.23

UTILITY

Metres: 1.9 x 1.8

Feet: 6.23 x 5.90

WC

Metres: 1.9 x 1.6

Feet: 6.23 x 5.24



First floor

BEDROOM 1

Metres: 2.9 x 3.8

Feet: 9.51 x 12.46

BEDROOM 2

Metres: 2.9 x 4.4

Feet: 9.51 x 14.43

BEDROOM 3

Metres: 3.0 x 2.6

Feet: 9.84 x 8.53

BATHROOM

Metres: 1.9 x 2.2

Feet: 6.23 x 7.21



Disclaimer

The details in this brochure are subject to change and do not constitute part of a contract. Prospective buyers must satisfy themselves by inspection or otherwise as to the accuracy of information given in the brochure. Images are provided for illustration purposes only and may differ to the homes available. Please speak to a sales advisor for further information on the external layouts and levelling on this site.



The Austin

3 bedroom home
Plots: 5, 60, 61, 76
Sq.m 86.7
Sq.ft 933

- Modern fitted kitchens with integrated appliances
- High quality Karndean flooring to the kitchen and bathrooms
- Glass patio doors opening to the garden space
- Allocated off-road parking
- 10 year NHBC new homes warranty
- Private turfed rear gardens



Ground floor

KITCHEN / DINER

Metres: 5.5 x 2.7

Feet: 18.04 x 8.85

LOUNGE

Metres: 5.5 x 3.2

Feet: 18.05 x 10.49

WC

Metres: 1.7 x 1.0

Feet: 5.57 x 3.28



First floor

BEDROOM 1

Metres: 3.4 x 2.6

Feet: 11.15 x 8.53

EN SUITE

Metres: 1.6 x 1.2

Feet: 5.24 x 3.93

BEDROOM 2

Metres: 3.3 x 2.1

Feet: 10.82 x 6.88

BEDROOM 3

Metres: 3.3 x 2.2

Feet: 10.82 x 7.21

BATHROOM

Metres: 2.0 x 2.6

Feet: 6.56 x 8.53



Disclaimer

The details in this brochure are subject to change and do not constitute part of a contract. Prospective buyers must satisfy themselves by inspection or otherwise as to the accuracy of information given in the brochure. Images are provided for illustration purposes only and may differ to the homes available. Please speak to a sales advisor for further information on the external layouts and levelling on this site.



The Yale

4 bedroom home
Plots: 54, 55, 56, 57
Sq.m 115.8
Sq.ft 1246

- Modern fitted kitchens with integrated appliances
- High quality Karndean flooring to the kitchen and bathrooms
- Large master bedroom with en-suite to the top floor
- Allocated off-road parking
- 10 year NHBC new homes warranty
- Private turfed rear gardens



Ground floor

KITCHEN / DINER

Metres: 4.8 x 3.0

Feet: 15.74 x 9.84

LOUNGE

Metres: 5.2 x 3.3

Feet: 17.06 x 10.82

WC

Metres: 1.9 x 1.0

Feet: 6.23 x 3.28



First floor

BEDROOM 1

Metres: 5.3 x 3.6

Feet: 17.38 x 11.81

BEDROOM 2

Metres: 4.1 x 3.0

Feet: 13.45 x 9.84

BEDROOM 3

Metres: 4.1 x 2.6

Feet: 13.45 x 8.53

BATHROOM

Metres: 1.9m x 2.6

Feet: 6.23 x 8.53



Second floor

BEDROOM 4

Metres: 3.3 x 2.2

Feet: 10.82 x 7.2

EN SUITE

Metres: 1.7 x 2.2

Feet: 5.57 x 7.21



Disclaimer

The details in this brochure are subject to change and do not constitute part of a contract. Prospective buyers must satisfy themselves by inspection or otherwise as to the accuracy of information given in the brochure. Images are provided for illustration purposes only and may differ to the homes available. Please speak to a sales advisor for further information on the external layouts and levelling on this site.

Site plan



- The Cambridge**
2 bedroom home
Plots 6, 7, 12, 13, 18, 19, 20, 21
- The Austin**
3 bedroom home
Plots 5, 60, 61, 76
- The Washington**
3 bedroom home
Plots 8, 9, 10, 11, 58, 59, 69, 70, 71, 72, 73, 74, 75
- The Yale**
4 bedroom home
Plots 54, 55, 56, 57





People. Places. Purpose.

Blue Mans Way, Catcliffe, Rotherham, S60 5UR
0161 447 5050 / sales@plumlife.co.uk

Disclaimer

The details in this brochure are subject to change and do not constitute part of a contract. Prospective buyers must satisfy themselves by inspection or otherwise as to the accuracy of information given in the brochure. Images are provided for illustration purposes only and may differ to the homes available; please ask a sales advisor for more information.

