



# HAVEN VIEW



## CUBE HOMES



# *Welcome to* **Haven View**

An impressive development of 23 prestigious 3 and 4 bedroom homes nestled within the picturesque, suburban area of Moorside.

Each property has been perfectly crafted to combine stunning architecture with contemporary design ensuring an ideal living environment.

With spacious interiors and meticulous attention to detail, each home has been designed to provide an unparalleled living experience.

Whether you're seeking a beautifully designed modern home or a place to create lasting memories, our homes in Moorside are the perfect choice. Experience the epitome of comfortable and modern living in a vibrant community.



CUBE HOMES





# Ideally Located

Beyond the luxurious interiors, *Haven View* boasts plenty of picturesque scenery ideal for the avid outdoor explorer. The surrounding area is dotted with green spaces, allowing residents to enjoy the beauty of nature right on their doorstep.

Amongst the peace and tranquillity residents are still ideally located for accessible and efficient travel. Manchester City Centre is just 9 miles away, making it convenient enough to head into the city on a weekend or easy commuting for work with Derker Metrolink stop under 2 miles away. Travelling by car? *Haven View* is roughly 1.2 miles from the A62.



ALEXANDRA PARK OLDHAM



MANCHESTER CITY CENTRE

GETTING TO  
OLDHAM



By Road  
**10 mins**



By Bus  
**20 mins**



By Bike  
**23 mins**



On Foot  
**50 mins**

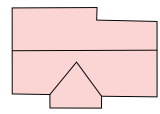
From Haven View, getting into Oldham is easy, from here you'll find connections to Rochdale, Central Manchester and beyond to East Didsbury. Haven View is also less than **35 minutes to Manchester Airport** and **30 minutes to Stockport**.



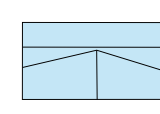


# Development Plan

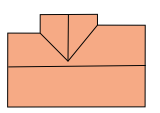
HOUSETYPES



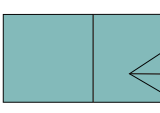
**The Brandon**  
3-bedroom home



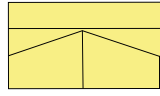
**The Bedford**  
3-bedroom home




**The Ashcroft**  
3-bedroom home



**The Granville**  
4-bedroom home



**The Abercorn**  
4-bedroom home



**The Hackett**  
4-bedroom home



# The Ashcroft

*Many people believe the kitchen is the heart of the home, and that certainly is the case with The Ashcroft.*

The kitchen and open-plan dining area are a major feature of the ground floor. The kitchen has been beautifully appointed with soft closing drawers and the latest energy-saving white goods to help save energy and the climate.

This space gives the family a place to eat and congregate during a busy day. There is also the bathroom and utility room to meet the needs of modern living.

Both the kitchen and spacious living room have large windows which allow the rooms to be flooded with natural light.

On the first floor, there are three bedrooms, with the master bedroom being served by en-suite facilities.

*Plots* 11, 12, 15



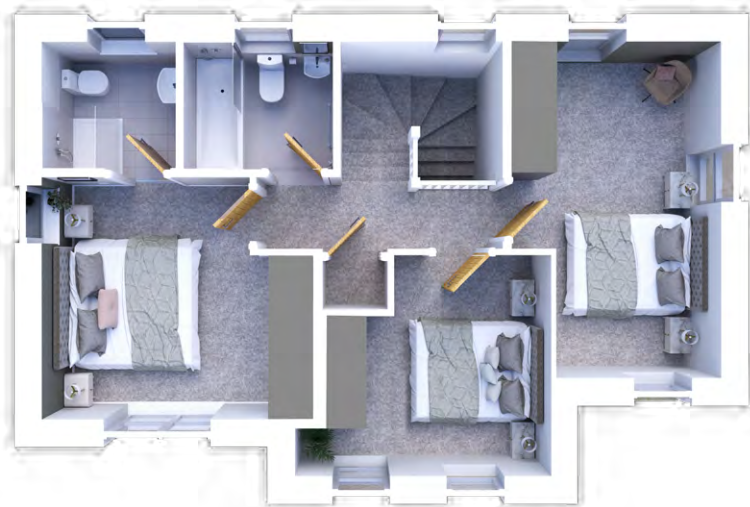
## Ground Floor

<b>Living Room</b>
2.96m x 4.79m    9.71ft x 15.71ft
<b>Kitchen Diner</b>
4.07m x 5.35m    13.35ft x 17.55ft
<b>WC</b>
1.11m x 1.68m    3.64ft x 5.51ft
<b>Utility</b>
1.52m x 1.29m    4.98ft x 4.23ft



## First Floor

<b>Master Bedroom</b>
3.85m x 3.42m    12.63ft x 11.22ft
<b>Ensuite</b>
1.91m x 1.86m    6.26ft x 6.10ft
<b>Second Bedroom</b>
3.65m x 2.51m    11.97ft x 8.23ft
<b>Third Bedroom</b>
2.97m x 4.79m    9.74ft x 15.71ft
<b>Bathroom</b>
2.10m x 1.86m    6.88ft x 6.10ft



The details in this brochure are subject to change and do not constitute part of a contract. Dimensions are for guidance only and prospective buyers must satisfy themselves by inspection or otherwise to ensure accuracy.





# The Bedford

three BEDROOMS

*A family that lives together, loves together and collaboration is at the heart of The Bedford's design with its large dining area.*

The large open plan kitchen and dining area is specifically designed for collaboration, be it family meal times, games nights or cosy nights in. The Bedford features large bi-fold doors off the kitchen area which lead directly into the garden, perfect for socialising.

This house type benefits from three well-appointed bedrooms upstairs, all offering a balance of comfort and space. The master bedroom also comes with the luxury of its own en suite bathroom, providing added convenience and privacy. **Plots 13, 14, 16**

## Ground Floor

- Living Diner**  
3.93m\* x 4.99m 12.89ft x 16.37ft
- Kitchen**  
5.02m\* x 4.99m 16.47ft x 16.37ft
- WC**  
1.02m x 1.65m 3.34ft x 5.41ft
- Utility**  
1.02m x 0.94m 3.34ft x 3.08ft



## First Floor

- Master Bedroom**  
2.77m x 4.97m 9.08ft x 16.30ft
- Ensuite**  
2.77m x 1.06m 9.08ft x 3.47ft
- Second Bedroom**  
2.77m x 3.78m 9.08ft x 12.040ft
- Third Bedroom**  
2.17m x 3.40m 7.11ft x 11.06ft
- Bathroom**  
2.17m x 2.01m 7.11ft x 6.59ft

\*Max



The details in this brochure are subject to change and do not constitute part of a contract. Dimensions are for guidance only and prospective buyers must satisfy themselves by inspection or otherwise to ensure accuracy.



# The Brandon

*The unique three-bedroom Brandon is a spacious haven away from the rigours of a busy world.*

Entering the home on the ground floor, on one side is a large kitchen and dining area where the family can come together and talk about the events of the day. On the other side is a large living room where the family can relax. The ground floor also has a WC and a perfect sized utility room.

Upstairs, the master bedroom enjoys en-suite facilities, while the two other bedrooms have a family bathroom to share. The Brandon has everything you could need for family living.

Plot 1



## Ground Floor

Living Room
3.00m x 5.84m    9.84ft x 19.16ft
Kitchen Diner
4.23m x 5.02m    13.87ft x 16.46ft
WC
1.13m x 1.88m    3.70ft x 6.16ft
Utility
1.19m x 1.67m    3.90ft x 5.47ft



## First Floor

Master Bedroom
4.28m* x 3.03m    14.04ft x 9.94ft
Ensuite
1.97m x 1.88m    6.46ft x 6.16ft
Second Bedroom
3.01m* x 5.82m    9.87ft x 19.09ft
Third Bedroom
3.46m* x 2.92m    11.35ft x 9.58ft
Bathroom
2.15m x 1.90m    7.05ft x 6.23ft

\*Max



The details in this brochure are subject to change and do not constitute part of a contract. Dimensions are for guidance only and prospective buyers must satisfy themselves by inspection or otherwise to ensure accuracy.





# The Abercorn

*Beautifully appointed and designed for modern life, the four-bedroom Abercorn is developed with the needs of a large family in mind.*

On the ground floor, a spacious lounge leads to the heart of the home with a fabulous open-plan kitchen dining area, which allows for the family to get together and eat at the end of a busy day.

The Abercorn also features a utility room and well-proportioned bedrooms.

Upstairs, a beautifully finished master bathroom is at the centre of the space, with the master bedroom having its own en-suite facilities.

**Plots** 2, 3, 4, 5, 6, 7, 8, 9, 10

## Ground Floor

<b>Living Room</b>	3.23m x 5.21m	10.59ft x 17.09ft
<b>Kitchen Diner</b>	5.58m x 5.17m	18.30ft x 16.96ft
<b>WC</b>	0.88m x 1.61m	2.88ft x 5.28ft
<b>Utility</b>	0.87m x 0.96m	2.85ft x 3.14ft



## First Floor

<b>Master Bedroom</b>	3.38m* x 3.99m	11.09ft x 13.09ft
<b>Ensuite</b>	1.52m x 2.09m	4.98ft x 6.85ft
<b>Second Bedroom</b>	2.85m x 3.12m	9.35ft x 10.23ft
<b>Third Bedroom</b>	2.76m x 2.65m	9.05ft x 8.69ft
<b>Fourth Bedroom</b>	3.33m* x 4.20m	10.93ft x 13.78ft
<b>Bathroom</b>	1.70m x 2.08m	5.57ft x 6.82ft

\*Max



The details in this brochure are subject to change and do not constitute part of a contract. Dimensions are for guidance only and prospective buyers must satisfy themselves by inspection or otherwise to ensure accuracy.



# The Granville

*Benefitting from beautiful views,  
The Granville is the perfect haven as  
a hub to return to at the end of the day.*

With Cube Homes' characteristic large windows throughout allowing natural light to flood the space, the spacious living room and kitchen allow for the family to eat, collaborate and relax in beautifully appointed surroundings. The kitchen diner leads onto the garden via a set of bi-fold doors to allow you to make the most of the outdoors.

That theme is continued upstairs with the master bedroom served by a spacious balcony, to allow the outside in, and also en-suite facilities. Also on the upper floor, the other three bedrooms are spacious and appointed for the needs of modern life.

*Plots* 18, 19, 20, 21, 22, 23



## Ground Floor

**Living Room**  
3.81m x 5.18m    12.50ft x 16.99ft

**Kitchen Diner**  
5.92m\* x 8.08m    19.42ft x 26.50ft

**WC**  
0.95m x 1.60m    3.11ft x 5.24ft

**Utility**  
0.95m x 1.62m    3.11ft x 5.31ft



## First Floor

**Master Bedroom**  
3.71m\* x 4.40m    12.17ft x 14.43ft

**Ensuite**  
1.63m x 2.40m    5.35ft x 7.87ft

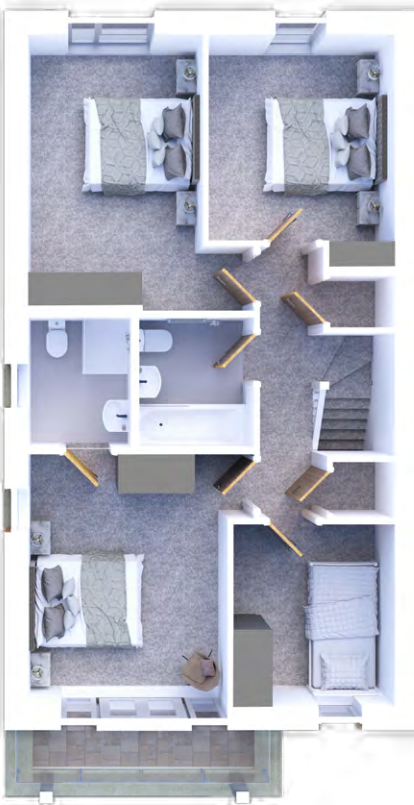
**Second Bedroom**  
3.70m\* x 5.02m    12.14ft x 16.47ft

**Third Bedroom**  
3.02m x 4.86m    9.90ft x 15.94ft

**Fourth Bedroom**  
2.59m x 3.11m\*    8.50ft x 10.20ft

**Bathroom**  
1.91m x 2.40m    6.26ft x 7.87ft

\*Max



The details in this brochure are subject to change and do not constitute part of a contract. Dimensions are for guidance only and prospective buyers must satisfy themselves by inspection or otherwise to ensure accuracy.





# The Hackett

*Busy families lead busy lives and The Hackett allows for the family to live and play their way.*

The ground floor is split between a spacious kitchen diner, where the family is able to gather and talk about the events of the day, and on the other side is the lounge where the family can kick back and relax.

Both the kitchen and lounge lead onto the garden, making these spaces feel like a perfect continuation of your home.

On the upper floor, the master bedroom comes with a Juliette balcony and en-suite facilities. The rest of the family will find a further three good-sized bedrooms and a family bathroom to share.

*Plot 17*

four  
4  
B E D R O O M  
H O U S E

## Ground Floor

**Living Room**  
3.26m x 7.03m 10.69ft x 23.06ft

**Kitchen Diner**  
3.99m\* x 6.24m\* 13.09ft x 20.47ft

**WC**  
1.10m x 1.52m 3.60ft x 4.98ft

**Utility**  
1.08m x 1.70m 3.54ft x 5.57ft



## First Floor

**Master Bedroom†**  
2.75m x 4.38m 9.02ft x 14.37ft

**Ensuite**  
1.92m x 1.80m 6.29ft x 5.90ft

**Second Bedroom**  
3.54m\* x 3.23m\* 11.61ft x 10.59ft

**Third Bedroom**  
3.28m x 3.98m 10.76ft x 13.05ft

**Fourth Bedroom**  
3.27m\* x 2.95m\* 10.72ft x 9.67ft

**Bathroom**  
2.01m x 1.80m 6.59ft x 5.90ft



\*Max. † Excludes external terrace

The details in this brochure are subject to change and do not constitute part of a contract. Dimensions are for guidance only and prospective buyers must satisfy themselves by inspection or otherwise to ensure accuracy.



# Luxurious, modern living at its best

At *Haven View*, a high quality specification comes as standard. You can expect nothing but beauty in every detail of each room in your stunning new home. There will also be an opportunity to personalise and upgrade elements in your home, subject to build stage.



## Kitchen

- A range of stylish options to suit all tastes including a choice of slab doors, available in a selection of colours with Super Matt or Gloss finishes\*
- Soft closing cupboard doors and drawers as standard
- Choice of worktops with upstands\*
- Karndean flooring to the kitchen, dining room and hallways
- Downlights to kitchen and under unit lights
- Fully integrated Bosch appliances including fridge freezer, oven, hob and dishwasher
- Bi-fold doors leading out to gardens
- Brushed chrome sockets

## Bathrooms & Cloakrooms

- Porcelanosa wall tiling to bathroom and en suite
- Downlights to bathroom and en suite
- Chrome towel rails to bathroom and en suite
- Karndean flooring to all bathrooms
- Showers in en suite bathrooms
- Shower over bath in family bathroom

## External

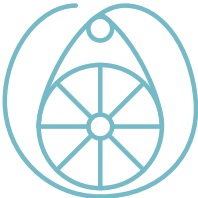
- Turfed rear gardens
- Boundary fencing to rear garden
- Rear gardens have bi-fold door access

## General

- USB points to all habitable rooms
- Gas central heating with A rated boiler
- Fibre broadband
- TV point to lounge, kitchen and master bedroom
- Brushed chrome sockets and switches to ground floor with white plastic to first floor

\*Upgrades available dependant on build stage

The details in this brochure are subject to change and do not constitute part of a contract. Prospective buyers must satisfy themselves by inspection or otherwise as to the accuracy of information given in this brochure. Images are provided for illustration purposes only and may differ to the homes available; please ask a sales advisor for more information.





# Your home builder, Cube Homes

For *more than a decade* Cube Homes has been delighting customers across the North West with a range of homes that have *quality at their heart*.

Whether you are searching for your first home, taking a step up or looking for luxury, we have the right home, built with you in mind.

Our architects design each home to suit modern living, with layouts perfect for entertaining and family life. When reserving your new home early, you can personalise many of the quality features we offer to suit your taste and lifestyle. Modern construction methods will mean your home will be energy efficient, low maintenance and environmentally friendly, making them less expensive to run than older properties while not costing the earth.

All of our homes come with a 10 year warranty as standard, giving you complete peace of mind.







# CUBE HOMES

## Enquiries

To find out more or register your interest:

**Call:** 0161 447 5050

**Email:** [Sales@plumlife.co.uk](mailto:Sales@plumlife.co.uk)

**Visit:** [www.cubehomes.com/find-your-home/haven-view](http://www.cubehomes.com/find-your-home/haven-view)



In partnership with



Cube Homes give notice to anyone who may read these particulars as follows: 1. These particulars are prepared for the guidance only of prospective purchasers. They are intended to give a fair overall description of the property but are not intended to constitute part of an offer or contract. 2. Any information contained herein (whether in the text, plans or photographs) is given in good faith but should not be relied upon as being a statement or representation of fact. 3. Nothing in these particulars shall be deemed to be a statement that the property is in good condition or otherwise nor that any services or facilities are in good working order. 4. The photographs appearing in this brochure show only certain parts and aspects of the property at the time when the photographs were taken. Certain aspects may have changed since the photographs were taken and it should not be assumed that the property remains precisely as displayed in the photographs. Furthermore no assumptions should be made in respect of parts of the property which are not shown in the photographs. 5. Any areas, measurements or distances referred to herein are approximate only. 6. Where there is reference in these particulars to the fact that alterations have been carried out or that a particular use is made of any part of the property this is not intended to be a statement that any necessary planning, building regulations or other consents have been obtained and these matters must be verified by any intending purchaser. 7. Descriptions of a property are inevitably subjective and the descriptions contained herein are used in good faith as an opinion and not by way of statement of fact. Published May 2025.